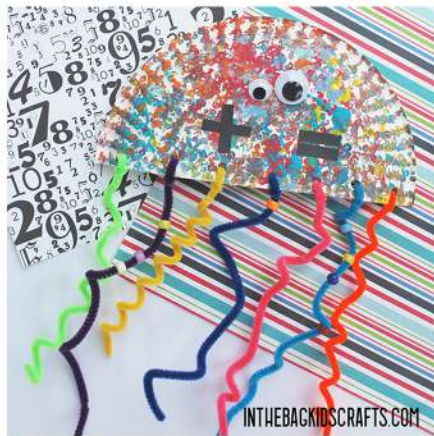


PAPER PLATE JELLYFISH

SUPPLIES FROM THE BAG



- 9" Paper plate
- Variety of paints
- Q-tips
- Pipe cleaners
- Newspaper
- Elmer's glue
- Pony beads
- Scissors
- Scraps of black construction paper
- Googly eyes
- Glue stick



PAPER PLATE JELLYFISH

step 1

- Cut the paper plate in half and place it on newspaper
- Bundle together a group of q-tips and secure it with a pipe cleaner.
- Squeeze 4-5 paint colors together and tape your q-tips into the paint and then onto the plate, until covered.



PAPER PLATE JELLYFISH

step 2

- Once the paint is dry, use the hole punch to make 7 holes along the bottom of the plate, evenly spaced.



PAPER PLATE JELLYFISH

step 3

- From the scraps of black construction paper, cut math symbols (whichever goes best with your child's skill level)
- Glue the googly eyes and math symbols in place

